

Square 1092

712-718 16th Street, S.E. (1919)

The four row houses have concrete foundations; red brick walls, two stories with three bays; a front door with transom; five rectangular one-over-one double-hung windows in front with stone sills; a front porch extending over two bays with red brick columns; a basket-weave course over the windows; a slate mansard roof (with fish-scale shingles and boxed rafters) with one gable dormer; and a flat tin roof. The door placement is at the third bay at 712 and 716, and the first bay at 714 and 718 (original appearance). The current appearance is the same. (These row houses are the same as 1600-1614 H Street (except for the paired doors) and were built at the same time.)

701-715 17th Street, S.E. (1929)

These eight row houses have concrete foundations; beige brick walls, two stories with three bays; a front door with transom; five rectangular six-over-one double-hung windows in front, with stone sills and a soldier course above all windows; a front porch extending over two bays with brick columns; garlands above the second-story windows, alternating gable pediments (with medallions); and a flat tin roof (original appearance). The row houses around the corner at 1623-1631 G Street, S.E. were built at the same time as 701-715 17th Street, S.E. The current appearance is the same except that one-over-one windows have been installed at 701, 703, 705, 709, 711, and 715 17th Street, S.E.

1601-1615 G Street, S.E. (1918)

These eight row houses have concrete foundations; beige brick walls, two stories with three bays; front door with transom; five rectangular one-over-one double-hung windows; a front porch extending over two bays (except the corner house, 1601 G Street, which has a porch extending over three bays), with brick columns; a basket-weave course over all windows; a straight mansard roof with slate shingles, boxed rafters and a single gable dormer; and a flat tin roof. The end row house, 1601 G Street, has an angled bay on the side. This is the original appearance. (The row houses at 1500-1510 and 1616-1628 Potomac Avenue, built by Howenstein in 1917 and 1923, are identical.) The row houses at 1600-1614 H Street, and 712-718 16th Street are also identical except for the red brick, and were also built by Herman R. Howenstein in 1919). The current appearance is the same.

1617-1621 G Street, S.E. (1925)

These three row houses have concrete foundations; red brick walls, two stories with three bays; front door with transom; five rectangular six-over-one double-hung windows and a soldier course above all windows; a front porch extending over two bays with brick columns; a straight mansard roof flared at the edge with exposed rafters, fish-scale slate shingles and double shed dormers; and a flat tin roof (original appearance). The current appearance is the same, except that one-over-one windows were installed at 1621 G Street. These row houses were built at the same time as 1616 and 1618 H Street.

1623-1631 G Street, S.E. (1929)

These five row houses have concrete foundations; beige brick walls, two stories with three bays; front door with transom; five rectangular one-over-one double-hung windows

in front; a front porch extending over two bays with brick columns; garlands above the second-story windows, and alternating gable pediments with medallions, and a flat tin roof (original appearance). These row houses are identical to the row houses at 701-715 17

Street, S.E. and were built at the same time. The current appearance is the same except that aluminum siding was installed at 1631 G Street, but removed in 2006.

1600-1614 H Street, S.E. (1919)

These eight row houses have concrete foundations; red brick walls, two stories with three bays; front door with transom; five rectangular one-over-one double-hung windows; a front porch extending over two bays with brick columns, except the corner row house (1600 H Street), which has a porch extending over three bays; a straight mansard roof with slate shingles, boxed rafters and a single gable dormer; a basket-weave course over the windows; and a flat tin roof (original appearance). (These row houses are the same as 712-718 16th Street and were built at the same time (except that the H Street row houses do not have the paired doors). The row houses at 1601-1615 G Street, identical to 712-718 16th except for the beige brick, were built by Herman R. Howenstein in 1918. The current appearance is the same except that the front porch at 1612 H Street has been replaced with a three-bay porch and six-over-six windows have been installed at 1610, 1612, and 1614 H Street.

1616-1618 H Street, S.E. (1925)

These two row houses have concrete foundations; red brick walls, two stories with three bays; front door with transom; five rectangular six-over-one double-hung windows in front with a soldier course above all windows; a front porch extending over two bays with brick columns; a straight mansard roof flaring at the edge with exposed rafters, fish-scale slate shingles and double shed dormers; and a flat tin roof (original appearance). The current appearance is the same, except that one-over-one windows were installed at 1618 H Street. These row houses were built at the same time as 1617-1621 G Street, S.E.

1622-1626 H Street, S.E. (1989)

These three flat-front flats have concrete foundations; masonry and stucco walls, three stories with three bays; and eight rectangular six-over-six windows. The doorframe at 1622 H Street has a broken pediment; the doorframes at 1624 and 1626 H Street have a three point arch with a fan. In front, they extend approximately eight feet further forward (i.e., toward the street), than the setback for all other row houses on the north side of H Street, S.E. The side yard of 1626 H Street is enclosed by a stucco wall. These buildings are not considered contributing buildings.

2
is

ID Number	Date	Building Type/Address	Architect	Style	There no
1092-22 to 29	1919	Dwelling, 1600-1614 H St SE	W.E. Howser	Colonial Revival	
1092-30 to 36	1919	Dwelling, 712-718 16th St SE	W.E. Howser	Colonial Revival	
1092-36	1919	Garage, rear 716 16th St SE			
1092-34	1923/1931	Garage, alley between 16th/17th/G&H Sts SE			
1092-35	1923	Garage, alley between 16th/17th/G&H Sts SE			
1092-36	1922	Garage, alley between 16th/17th/G&H Sts SE			
1092-14 to 21	1918	Dwelling 1601-1616 G St SE	W.E. Howser	Colonial Revival	
1092-38 to 39	1925	Dwelling, 1616-1618 H St SE	Herman R. Howenstein	Colonial Revival	
1092-39	ca 1920	Garage, rear 1616 H St SE			
1092-41 to 43	1925	Dwelling 1617-1621 G St SE	Herman R. Howenstein	Colonial Revival	
1092-42	ca 1960	Shed, rear 1619 G St SE			
1092-42	1925	Garage, rear 1621 G St SE			
1092-44 to 48	1929	Dwelling 1623-1631 G St SE	L.T. Williams	Colonial Revival	
1092-49 to 56	1929	Dwelling, 701-715 17th St SE	L.T. Williams	Colonial Revival	
1 There is no building permit on file for 1624 H Street, S.E. at DCRA or at D.C. Archives. The three-story flats at 1624 H Street, S.E., are flanked by 1622 and 1626 H Street, S.E., which have the same design and were built by the same owner and architect in 1989.					
1092-59 to 61	1989 2	Dwelling	Michael Finn	Modern	

building permit on file for 1624 H Street, S.E. at DCRA or at D.C. Archives. The three-story flats at 1624 H Street, S.E., are flanked by 1622 and 1626 H Street, S.E., which have the same design and were built by the same owner and architect in 1989.

Source: Barney Circle Historic District Application (2010, photographs: Sept. 2007)

712 16th Street, S.E.



714 16th Street, S.E.



716 16th Street, S.E.



718 16th Street, S.E.

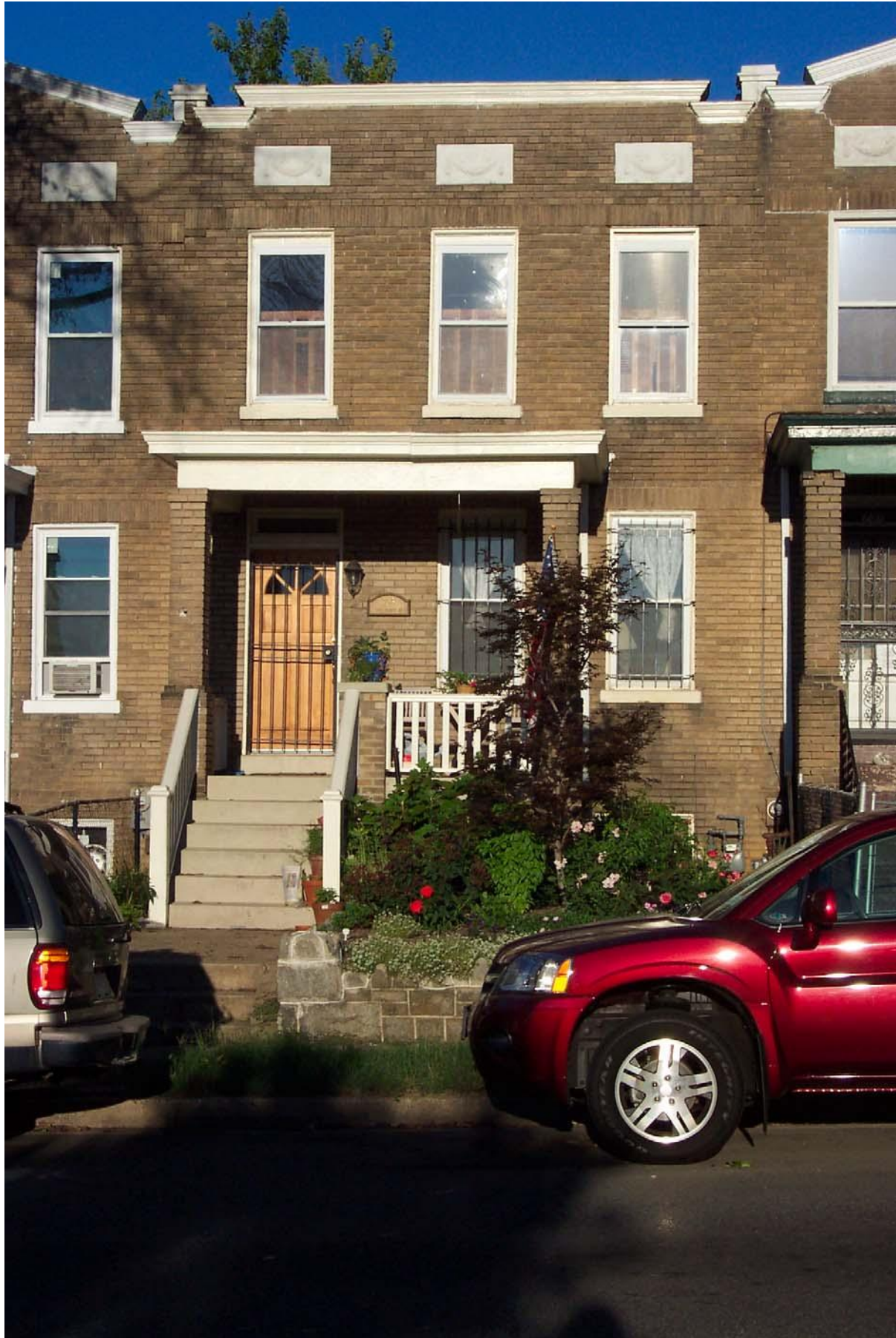


Street, S.E.

701 17th



703 17th Street, S.E.



705 17th Street, S.E.

707 17th Street, S.E.

709 17th Street, S.E.

711 17th Street, S.E.

713 17th Street, S.E.

715 17th Street, S.E.

715 17th Street, S.E. side view



1601 G Street, S.E.

1603 G Street, S.E.

1605 G Street, S.E.

1607 G Street, S.E.

1609 G Street, S.E.

1611 G Street, S.E.

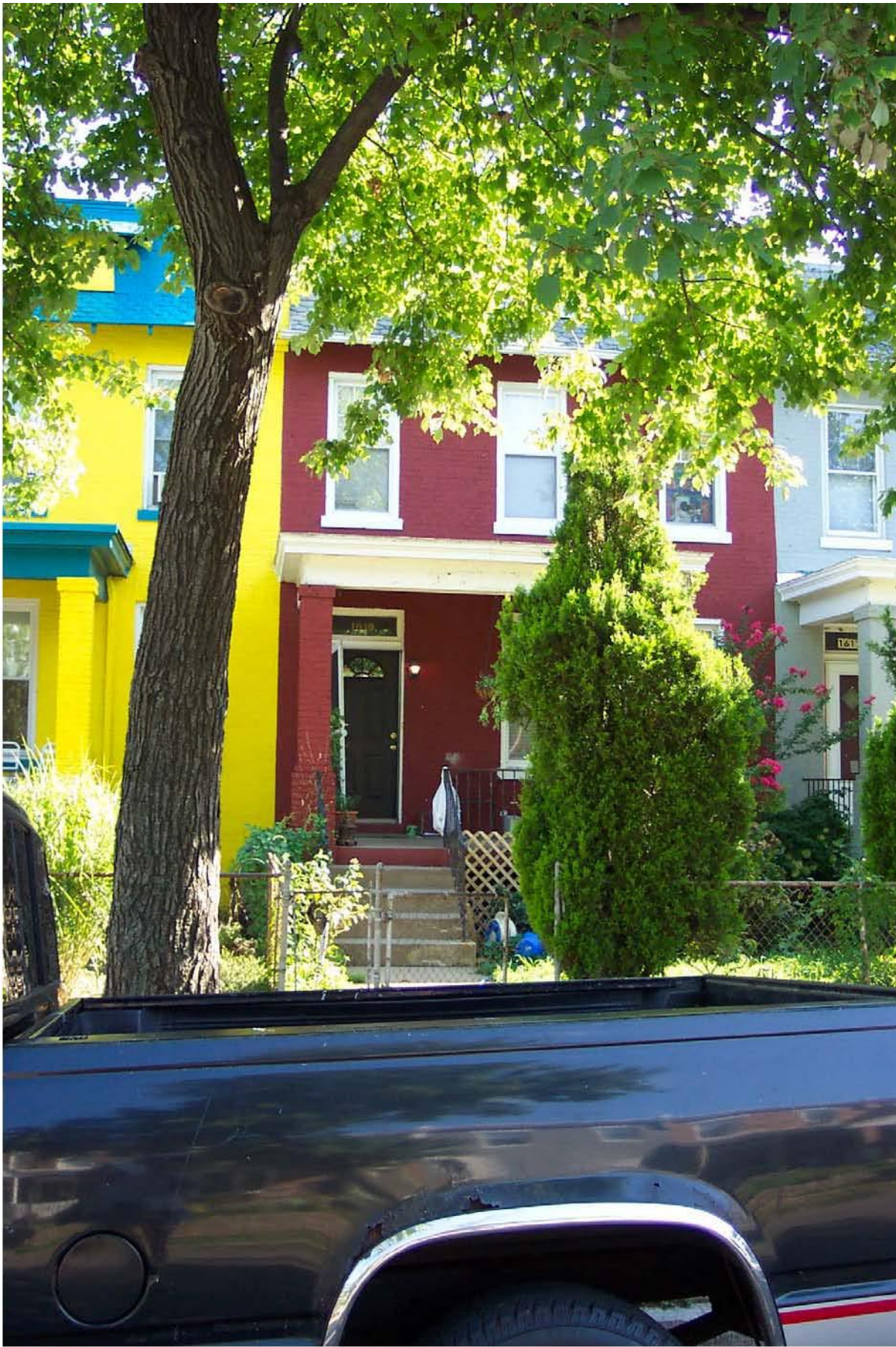
1613 G Street, S.E.

1615 G Street, S.E.

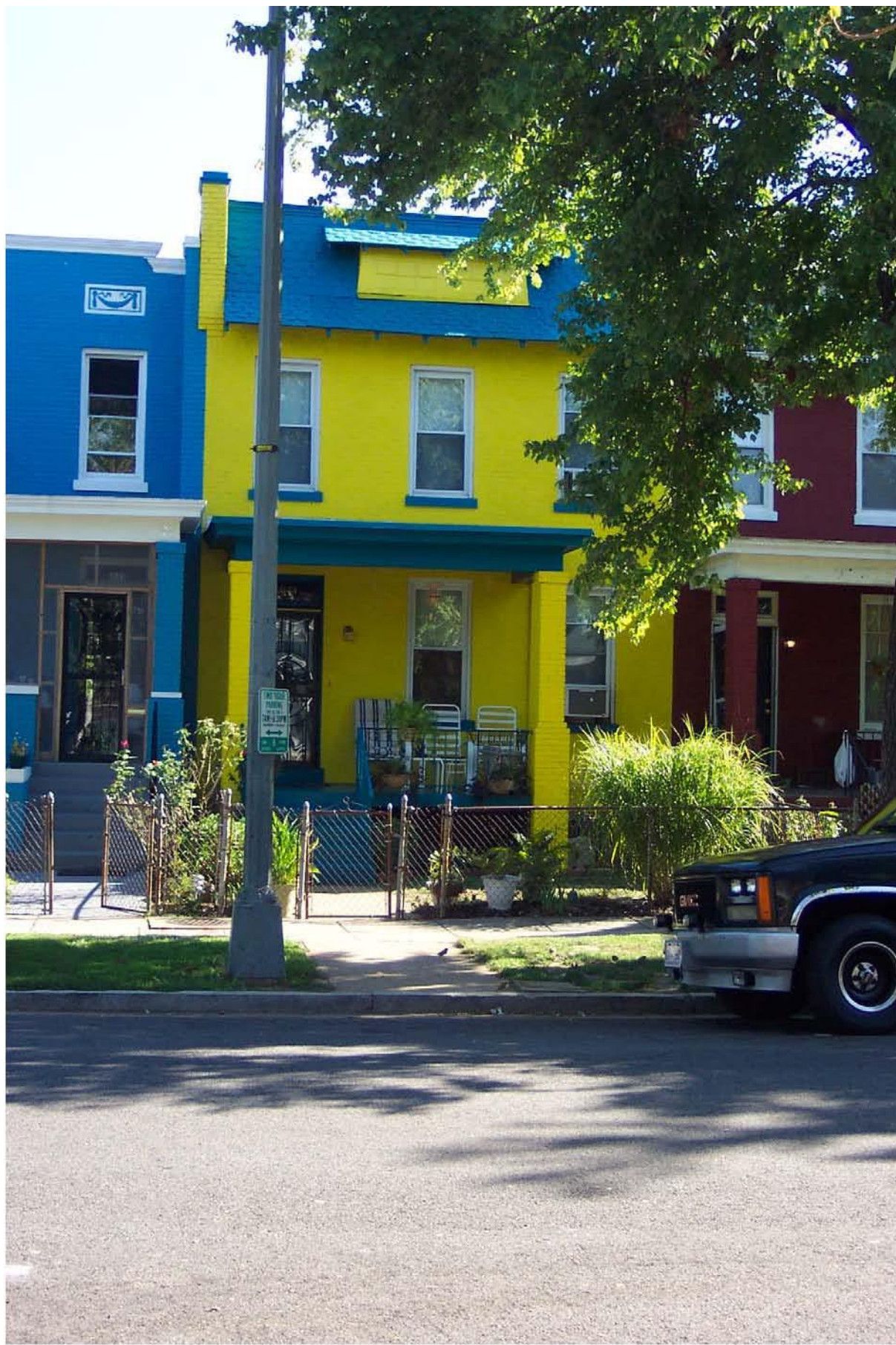
1617 G Street, S.E.



1619 G Street, S.E.



1621 G Street, S.E.



1623 G Street, S.E.

1625 G Street, S.E.

1627 G Street, S.E.

1629 G Street, S.E.

1631 G Street, S.E.

1600 H Street, S.E.

1600 H Street, S.E. showing angled bay on side

1602 H Street, S.E.

1604 H Street, S.E.

1606 H Street, S.E.

1608 H Street,S.E.

1610 H Street, S.E.

1612 H Street, S.E.

1614 H Street, S.E.

1616 H Street, S.E.

1618 H Street, S.E.

1622 H Street, S.E.

1624 H Street, S.E.

1626 H Street, S.E.

1626 H Street, S.E. side view
