

## Reconnaissance-Level Survey of H Street, N.E., Between 2nd and 15th Streets

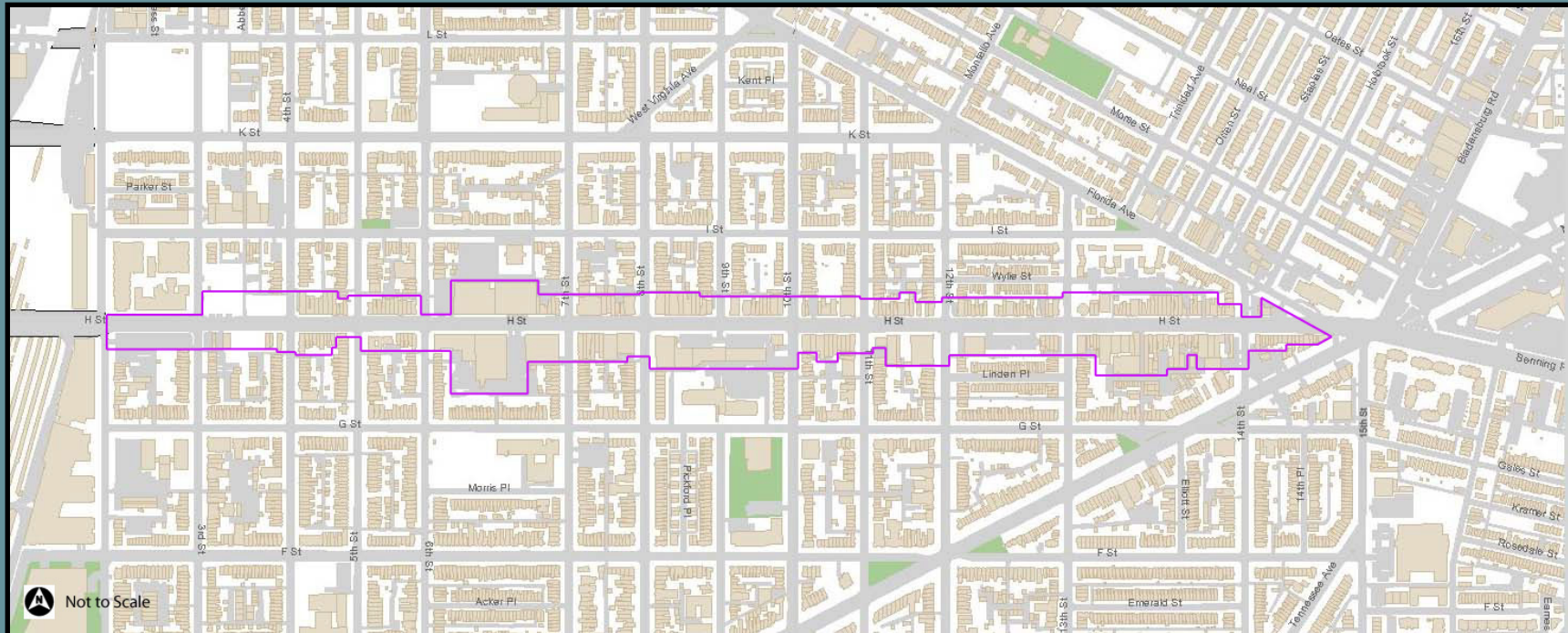


The 800 block of H Street, N.E., looking northeast, 1947 (Source: *Crockett Streetcar Photos, MS 414, Historical Society of Washington, D.C.*)

**EHT Traceries**

**2009**

# Project Methodology:



H Street Survey area between 2<sup>nd</sup> and 15<sup>th</sup> Street, N.E.

- Survey from the public right-of-way of buildings fronting H Street, N.E.
- Digital photos taken of façade and rear elevations (where accessible)
- D.C. Building Permit and Sanborn Fire Insurance Map research conducted
- General Tax assessment research for pre-permit properties
- Narrative architectural descriptions prepared and entered into database

# Survey Methodology:



400 block of H Street, N.E., view looking northwest  
(Source: D. Hanousek)



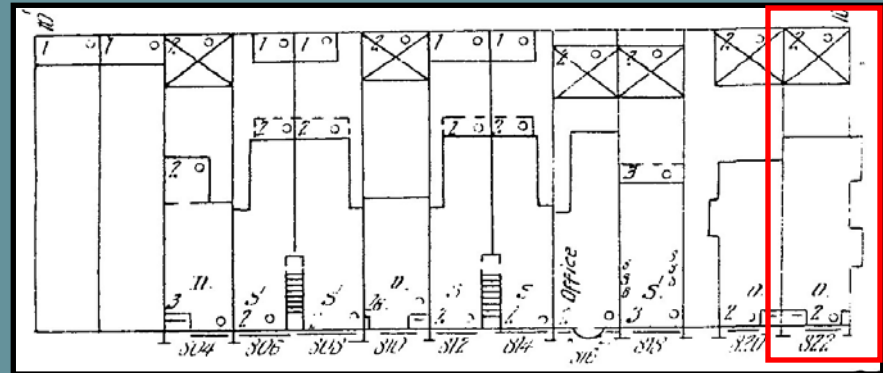
Square 808 map depicting lots fronting H Street, N.E. (Source: D.C. Office of Planning)

# Research Methodology:

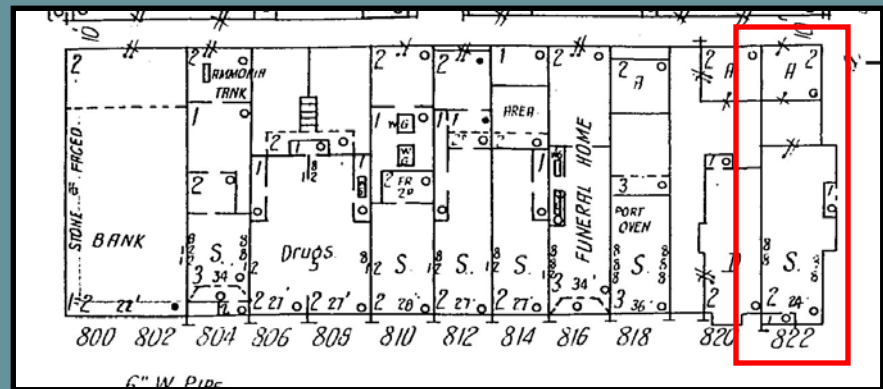


822 H Street, N.E., 1885

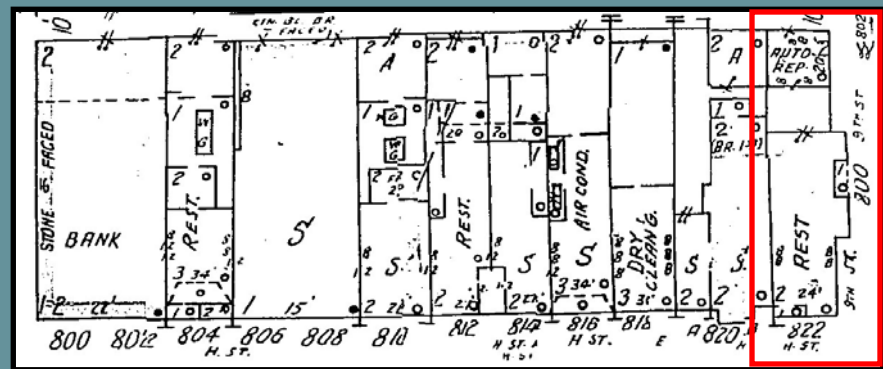
Permit Number	0642	Date	9/23/1885
Owner	Chappel, Oella, Mrs.	Roll of Microfilm	0089
Architect			
Builder			
Quantity	1		
Stories	2	Material	brick
Width	20	Depth	44
Purpose	dwelling	Number of Families	
Store?			
Solid/Filled	solid	Material of Foundation	brick
Front Material	pressed brick	Type of Stone	
Type of Roof	flat	Roof Material	tin
Heat		No Plumbing or Gasfitting	
No Electric		Roughing In Only	
Estimated Cost	\$3,500	No Sewer Available	
Notes	also a brick stable 20'x24'		
Updated	Extant	Square	Lot
		0911	0011
Address	822 H		Street NE
House Type	Semi-Det		



1904 Sanborn Fire Insurance Map



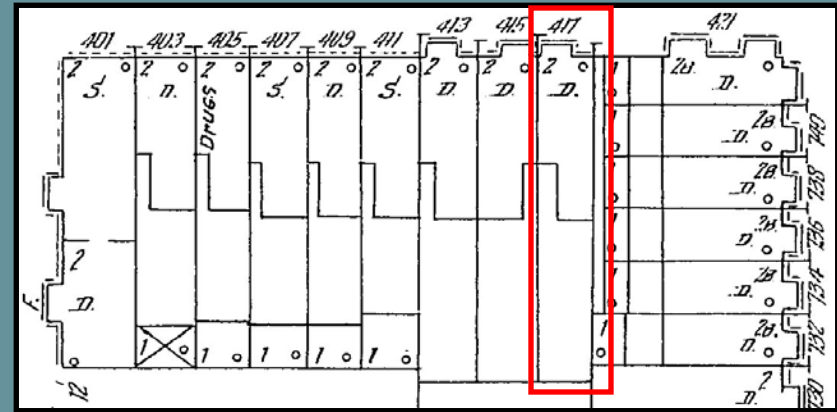
1928 Sanborn Fire Insurance Map



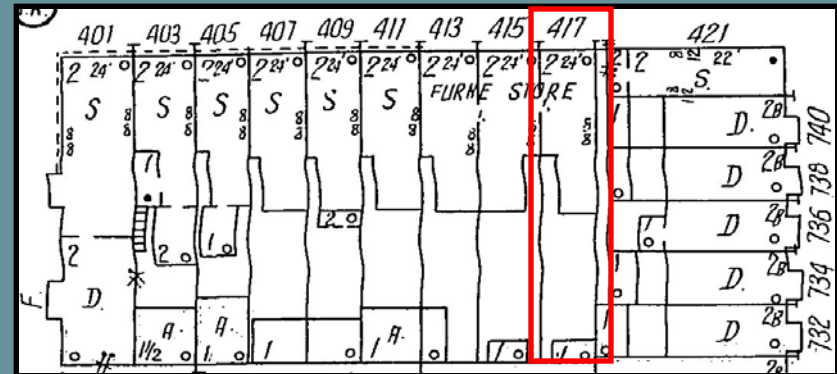
1960 Sanborn Fire Insurance Map



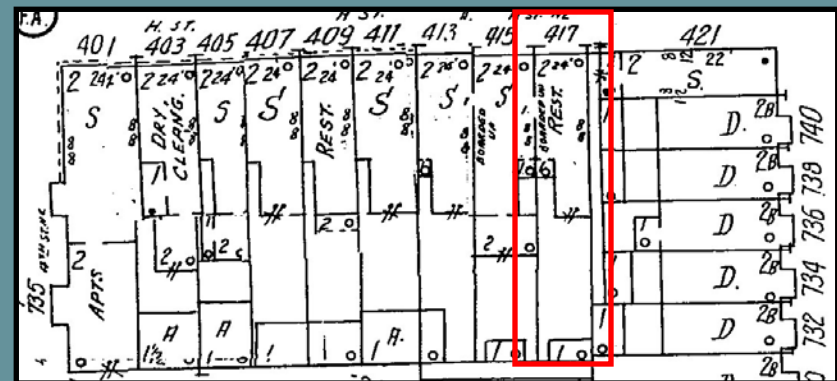
417 H Street, N.E., 1892



1904 Sanborn Fire Insurance Map



1928 Sanborn Fire Insurance Map

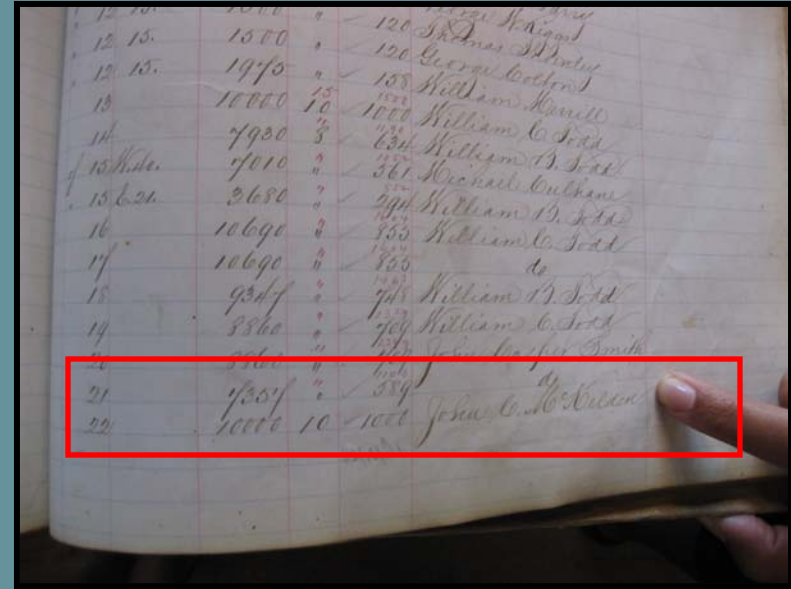


1960 Sanborn Fire Insurance Map

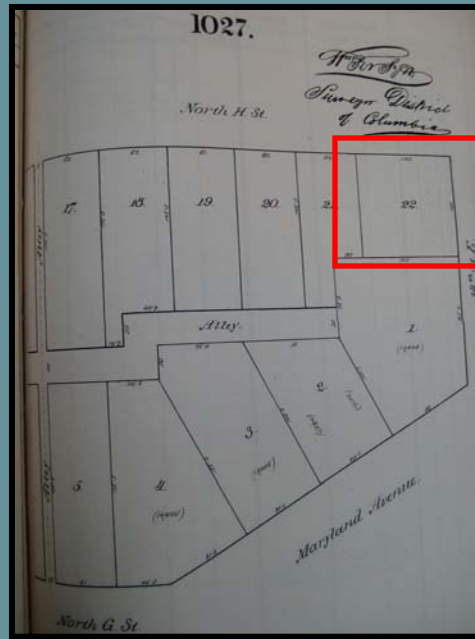
<b>Permit Number</b>	0988	<b>Date</b>						
	10/25/1892							
<b>Owner</b>	Weaver, Richard, Mrs.	<b>Roll of Microfilm</b>	0169					
<b>Architect</b>	Sommerville, C. W.							
<b>Builder</b>	Getz, August							
<b>Quantity</b>	3							
<b>Stories</b>	2	<b>Material</b>	brick					
<b>Width</b>	17	<b>Depth</b>	34					
<b>Purpose</b>	dwelling	<b>Number of Families</b>	1					
<b>Store?</b>								
<b>Solid/Filled</b>	solid	<b>Material of Foundation</b>	brick					
<b>Front Material</b>	pressed brick	<b>Type of Stone</b>						
<b>Type of Roof</b>	flat	<b>Roof Material</b>	tin					
<b>Heat</b>		<b>No Plumbing or Gasfitting</b>						
<b>No Electric</b>		<b>Roughing In Only</b>						
<b>Estimated Cost</b>	\$8,000	<b>No Sewer Available</b>						
<b>Notes</b>								
<b>Updated</b>	<b>Extant</b>	<b>Square</b>	<b>Lot</b>	<b>Address</b>				<b>House Type</b>
		0809	0812	413 H Street NE				Rowhouse
		0809	0810	415 H Street NE				Rowhouse
		0809	0818	417 H Street NE				Rowhouse



1379 and 1381 H Street, N.E. (c. 1872-1873)



General Assessment, 1872-1873. Corporation of Washington, Vol. 14 of 18. (Source: National Archives)



SQUARE No 1027.

Lot.	Improvements		Remarks
	Assessed Val. or Pt. of Sub. of Pt. of Sub. of	Assessed Value of	
1.	.10		
2.	.08	400.	1 frame.
3.	.08		
4.	.08		
5.	.08		
17.	.15		
18.	.15		
19.	.15		
20.	.15		
21.	.15		
22.	.10	4200.	7 frames.

1874 Faetz & Pratt Real Estate Directory of the City of Washington, Vol. 2 (Source: Historical Society of Washington, D.C.)

# Individual Recommendations:

Northeast Branch of the Home Savings Bank: 720-722 H Street, N.E.



- Built in 1912
- Constructed by Melton Construction Company
- Designed by Appleton P. Clark, Jr. in the Neoclassical style
- Home Savings Bank and American Security & Trust Co. merged in 1918
- 1935 addition, designed by Clark, doubled the size of the bank

# Individual Recommendations:

National Bank of Washington: 800 H Street, N.E.



- Built in 1921
- Constructed by J.L Parsons
- Designed by B. Stanley Simmons, a prominent D.C. architect
- Restrained interpretation of Beaux Arts style

# Individual Recommendations:

## Hubert Newsom Real Estate Building: 1110 H Street, N.E.



- Built in 1890 as a single-family dwelling
  - Owned and constructed by James D. Burn
- Altered in 1929 by real estate developer and lawyer Hubert Newsom
  - Adapted dwelling to serve as his office space
  - New façade was classically inspired
  - The adaptation of the residential building for commercial use is reminiscent of the commercial and financial institutions along H Street, N.E. and the larger Capitol Hill area in the late 1920s

# Individual Recommendations:

Hospitality Community Federal Credit Union: 1114 H Street, N.E.



- Constructed in 1973-1974 for \$100,000
  - Built by Marion Thomas Associates
  - Dedicated in 1974
  - First new construction along H Street, N.E. following the 1968 riots
- Credit Union was organized in 1965 by the United Planning Organization
  - Membership open to people living or working in the near northeast
- Evokes the arcaded massing of the John F. Kennedy Center for Performing Arts on F Street, N.W. and the National Geographic Society office building on 17<sup>th</sup> Street, N.W.

# Individual Recommendations:

Douglas Memorial United Methodist Church: 800 11th Street, N.E.



May 29, 1949

(Source: John P. Wymer Photographic Collection, 1948-1952, Areas 19-24, Photo # 1237, *Historical Society of Washington, D.C.*)



- Built in 1898 for \$18,000 in the Romanesque style
- Congregation informally began in 1876 and became active in 1878
- Constructed by J.C. Yost following the plans of Joseph C. Johnson
- Dedicated in its present form in 1907
- Served as the location of the 127<sup>th</sup> session of the Baltimore Conference at which President William Howard Taft spoke in 1911

# Then & Now:

Intersection of H Street, N.E. and 4<sup>th</sup> Street, N.E.,  
View looking Southeast

May 29, 1949

October 28, 2009



(Source: John P. Wymer Photographic Collection, 1948-1952, Areas 19-24, Photo # 1209, *Historical Society of Washington, D.C.*)

# Then & Now:

400 block of H Street, N.E., view looking Southeast

May 29, 1949

October 28, 2009

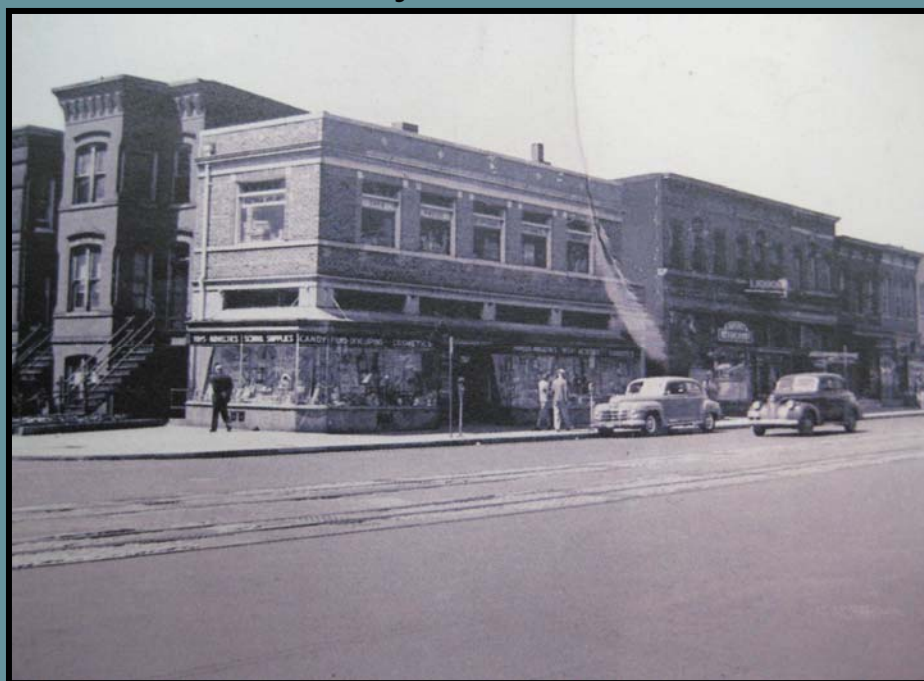


(Source: John P. Wymer Photographic Collection, 1948-1952, Areas 19-24, Photo # 1210, *Historical Society of Washington, D.C.*)

# Then & Now:

Intersection of H Street, N.E. and 5<sup>th</sup> Street, N.E.,  
View looking Southwest

May 29, 1949



October 28, 2009



(Source: John P. Wymer Photographic Collection, 1948-1952, Areas 19-24, Photo #1211, *Historical Society of Washington, D.C.*)

# Then & Now:

Intersection of H Street, N.E. and 6<sup>th</sup> Street, N.E.,  
View looking Southwest

May 29, 1949



October 28, 2009



(Source: John P. Wymer Photographic Collection, 1948-1952, Areas 19-24, Photo # 1220, *Historical Society of Washington, D.C.*)

# Then & Now:

800 block of H Street, N.E., View looking Northwest

August 27, 1950



October 28, 2009



(Source: John P. Wymer Photographic Collection, 1948-1952, Areas 19-24, Photo # 1236, *Historical Society of Washington, D.C.*)

# Then & Now:

500 Block of H Street, N.E., View looking Southeast

May 29, 1949



October 28, 2009



(Source: John P. Wymer Photographic Collection, 1948-1952, Areas 19-24, Photo # 1218, *Historical Society of Washington, D.C.*)

# Transportation & Development:



800 block of H Street, N.E., view looking Northeast  
(Source: Crockett Streetcar Photos, MS 414, *Historical Society of Washington, D.C.*)

- Streetcar line was built along H Street, N.E. in 1871
- Terminus was located at 15<sup>th</sup> and H Streets, N.E.
- A primary corridor into the city



# 1870s



716 H Street, N.E., 1872-1873



406 H Street, N.E., 1872-1873



409 H Street, N.E., 1872-1873

# 1880s



1200 H Street, N.E., 1886



1236 H Street, N.E., 1886



1413 H Street, N.E., 1887



1220 H Street, N.E., 1886

# 1890s



707 H Street, N.E., 1890



804 H Street, N.E., 1890



408 H Street, N.E., 1896

# 1880s & 1890s – Projecting Towers



1128 H Street, N.E., 1895



1100 H Street, N.E., 1887

# Early Twentieth Century – Small-scale Apartment Buildings



1346-1348 H Street, N.E., 1901



1341 H Street, N.E., 1907



402-404 H Street, N.E., 1912



1350-1352 H Street, N.E., 1913

# Early Twentieth Century – Purpose-built Commercial Buildings



1306 H Street, N.E., 1909



701 H Street, N.E., 1913



1365 H Street, N.E., 1927-1928

# 1930s



718 H Street, N.E., 1935



523 H Street, N.E., 1935



920 H Street, N.E., 1937



1313-1333 H Street, N.E., 1938

1940s



1016 H Street, N.E., 1940



924 H Street, N.E., 1945 (Photo: May 2009)



924 H Street, N.E., October 2009

# Continued Commercial Presence:



1230-1234 H Street, N.E.



1224 H Street, N.E.



1357-1359 H Street, N.E.



1335 H Street, N.E.

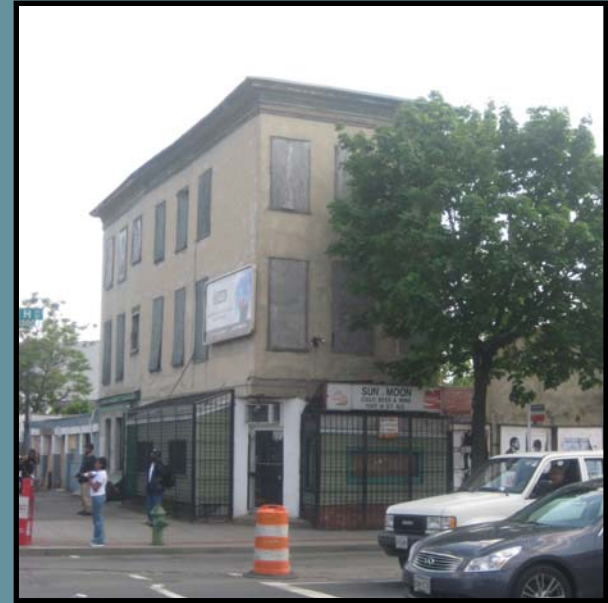
# Twenty-First Century Revitalization



1220-1222 H Street, N.E., 2007 (Source: D. Hanousek)



1220-1222 H Street, N.E., May 2009

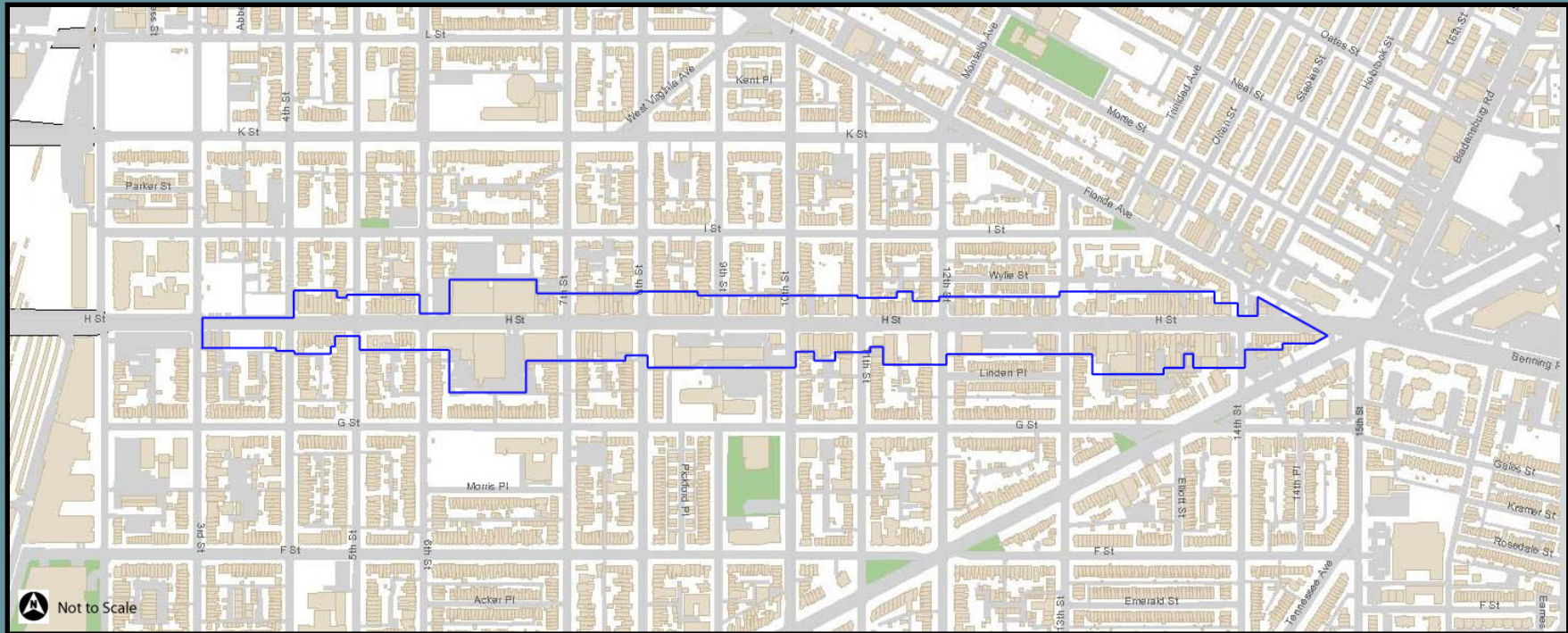


1387 H Street, N.E., May 2009



1387 H Street, N.E., October 2009

# Recommended H Street, N.E. Historic District Boundary:



- The recommended boundary for a proposed H Street, N.E. Historic District includes all buildings that face H Street beginning from 3rd Street on the south side and 4th Street on the north side and continuing eastward to the convergence of 15th Street, N.E., Maryland Avenue, N.E. and Florida Avenue, N.E.

# Thank You:

H Street Main Street

Stanton Park Neighborhood Association

Advisory Neighborhood Commission 6A

Abdo Development

Drury Tallant



1433 H Street, N.E.

