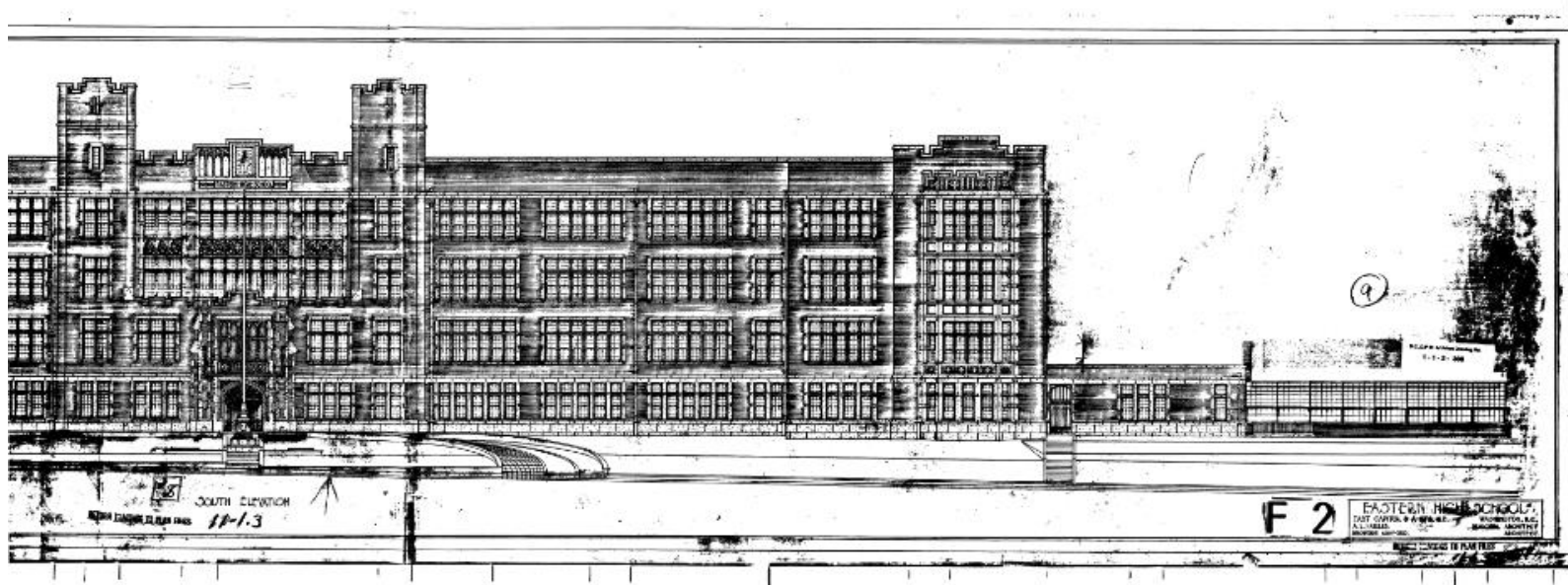


EASTERN HIGH SCHOOL

1700/1730 East Capitol Street NE

Historic Designation Application #23-08



Beth Purcell and Joanna Kendig
Capitol Hill Restoration Society
HPRB hearing, August 3, 2023



CHRS | MORE THAN 60 YEARS OF PRESERVATION

Outreach

In early 2022 principal Suh Brown and Mark Weinheimer (Capitol Hill Community Foundation) asked that CHRS nominate Eastern for its 100th anniversary in 2023

2022 Story of Our Schools supports the nomination

March 2023 CHRS files the nomination

June 2023 ANC 7D votes to support nomination

DC public schools in the Progressive Era

Progressive Era values

- Adolescence as a distinct life stage
- School designs to meet academic/vocational needs of adolescents

Congressional direction of DC public schools – early 20th century

- funding
- siting
- size of school and campus,
- curriculum: academic, vocational
- amenities

Congressional Schoolhouse Commission 1908 report

The ideal high school: Yeatman High School,
St. Louis- Tudor Revival

High schools proliferate in late 19th
century

- High schools in District of Columbia:
Central, Eastern, Western
- First Eastern High School
located in Peabody Elementary,
second in 1892 in building near
Eastern Market



Schoolhouse Commission plans for Eastern High School

- Larger school
- Expansive campus
- Laboratories, specialized classrooms

Eastern High School in 1923:

- 100 classrooms and laboratories
- Music room
- Printing plant
- Gymnasiums
- Armory
- Shooting range
- Conservatory
- Vocational ed / work shops
- Auto repair shop
- Home ec suite





Original building

1921 designed by Municipal Architect Snowden Ashford
Construction completed in 1923 under Municipal Architect Albert Harris

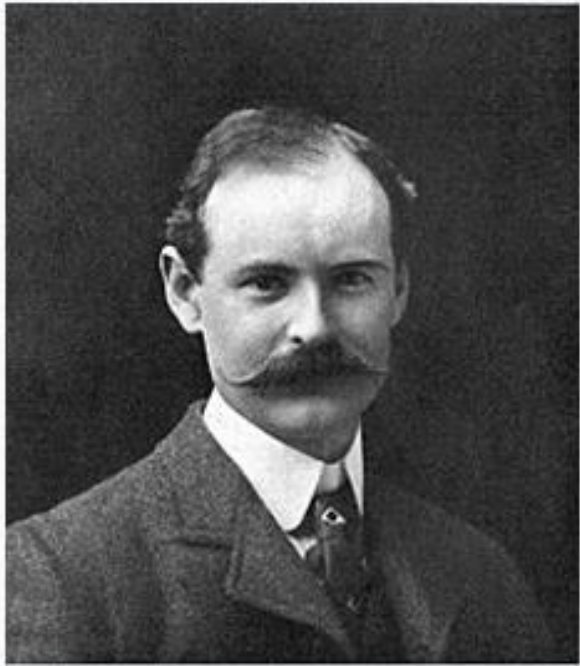
First addition

Addition of gymnasium and classrooms on north and northeast sides of the original building

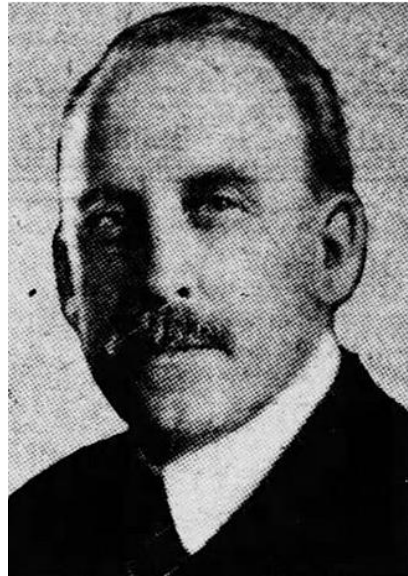
Designed and construction completed in 1938 under direction of Municipal Architect Nathan C. Wyeth

Municipal Architects

Snowden Ashford,
(1866-1927)



Albert L. Harris
(1869 – 1933)

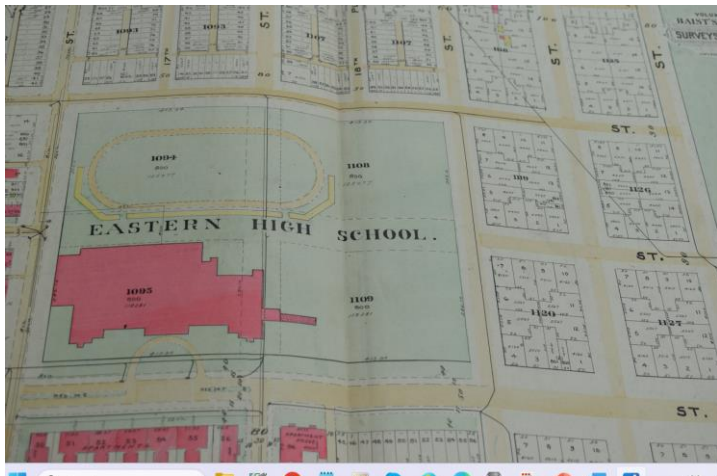
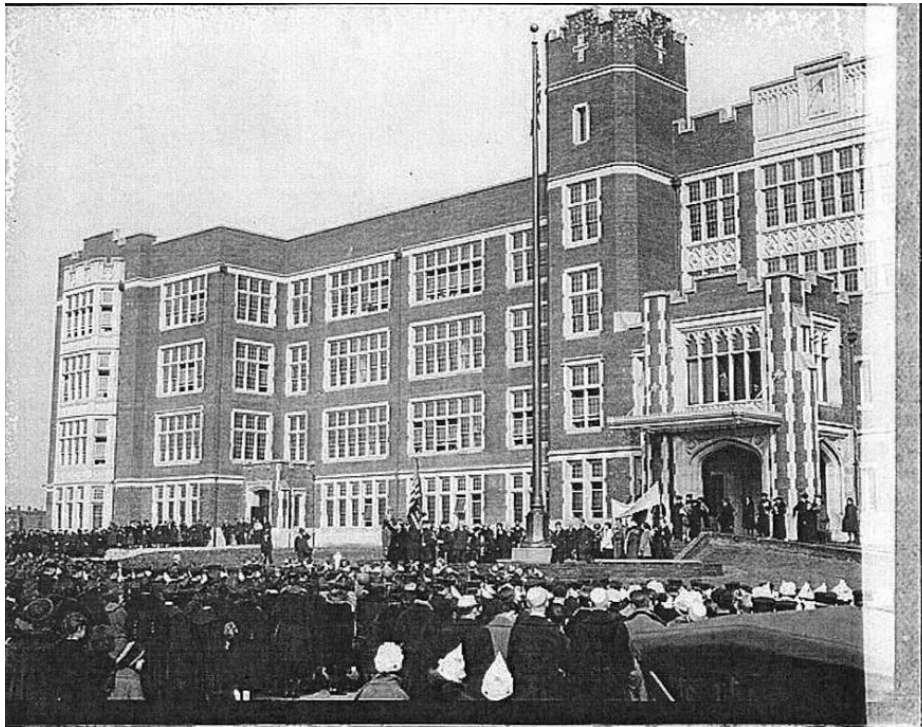


Snowden Ashford

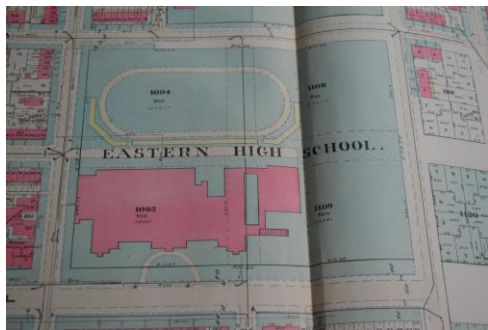
Municipal Architect from 1909 to 1921

Albert L. Harris – 1921 to 1933

Nathan C. Wyeth – 1933 to 1946



Baist 1928



Baist 1938

New Eastern High School Ready For Opening Feb. 15

Architecturally beautiful and representing the most modern type of schoolhouse, new Eastern High School, completed save for the installation of all furniture and equipment, is waiting for the middle of February, when its doors will formally be thrown open to receive some 1,100 impatient students now uncomfortably quartered in the old building. It had been planned to open the school at the beginning of the next semester, February 1, but unavoidable delay in installing the furniture and equipment has necessitated the postponement.

Every detail for shifting the student body from its cramped quarters in the old building at 7th and C streets southeast, which for thirty years has been Eastern's home, into the new building of enlarged accommodations and increased facilities has been arranged by Charles Hart, principal of the school. He is now making plans for the formal dedication of the new building which probably will be held about March 1, with elaborate ceremonies.

The students are keyed to the highest pitch awaiting the order which will send them into the new building. In preparation for the event, which will be chronicled in the school's history as an epoch-making one, they are busy cleaning and dusting the pictures, statues and trophies for the transfer into the halls of the new school.

Work Begun Two Years Ago.

gymnasium suits, a modern rifle range, six manual training shops, two dressing rooms (one for boys and the other for girls) and other features new in high school construction. The rifle range is 165 feet in length and will rank among the best in the country. It will have ten shooting targets.

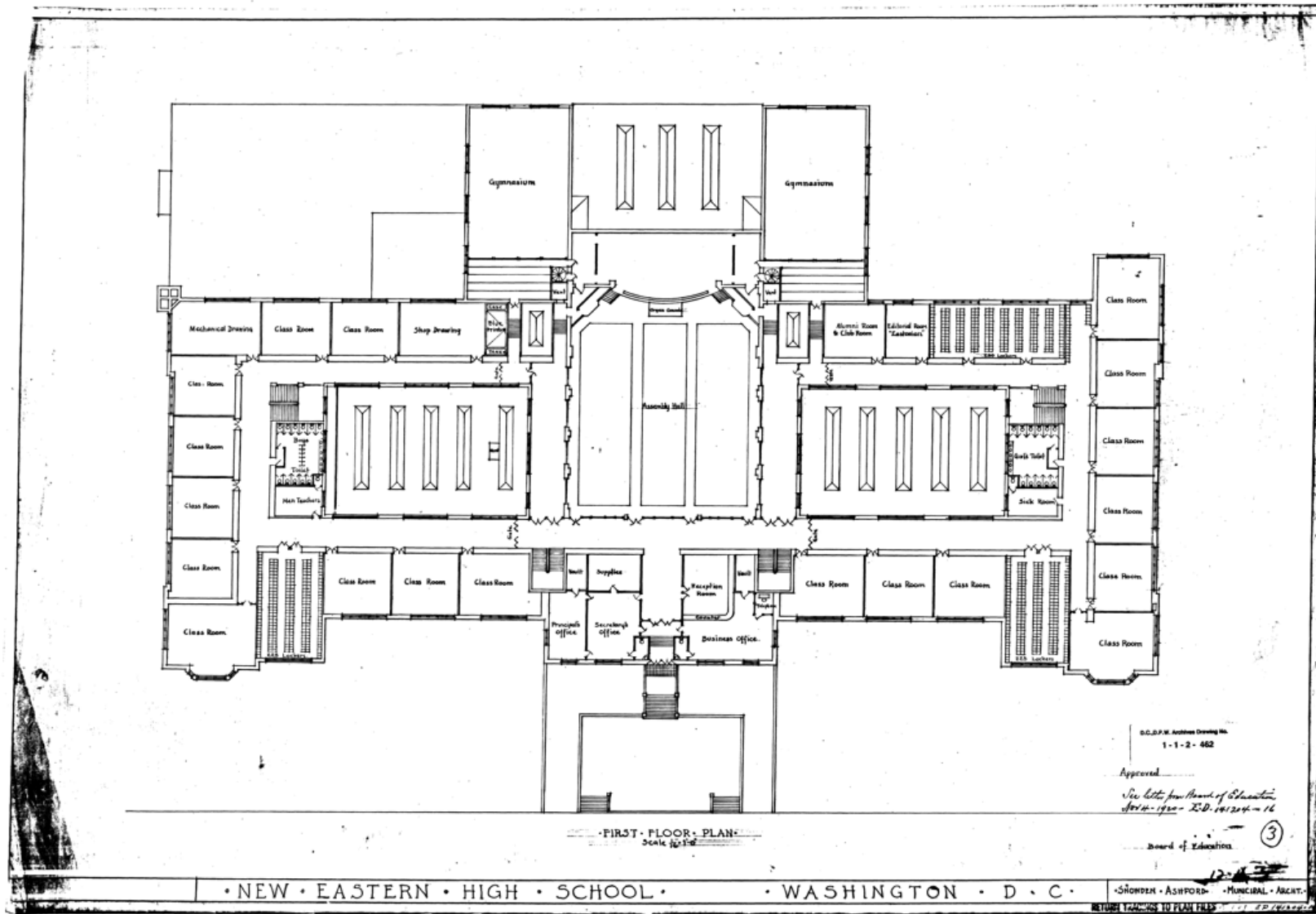
First Floor for Students.

The first floor of the building has been designed especially for the use of the high school students. On this floor are virtually all the shorthand, typewriting and bookkeeping classes. The top floor has rooms for classes in domestic art, domestic sciences and drawing. In connection with the domestic art course there is a model suite similar to the one at Central High School.

The athletic field, which is located a block north of the building, is larger than the one at Central. Work of grading the field was begun January 2 and is expected to be finished soon. Principal Hart, however, does not plan to make any use of it during the current school year. Two steel and wood stands seating between 2,000 and 3,000 persons will be erected around the field.

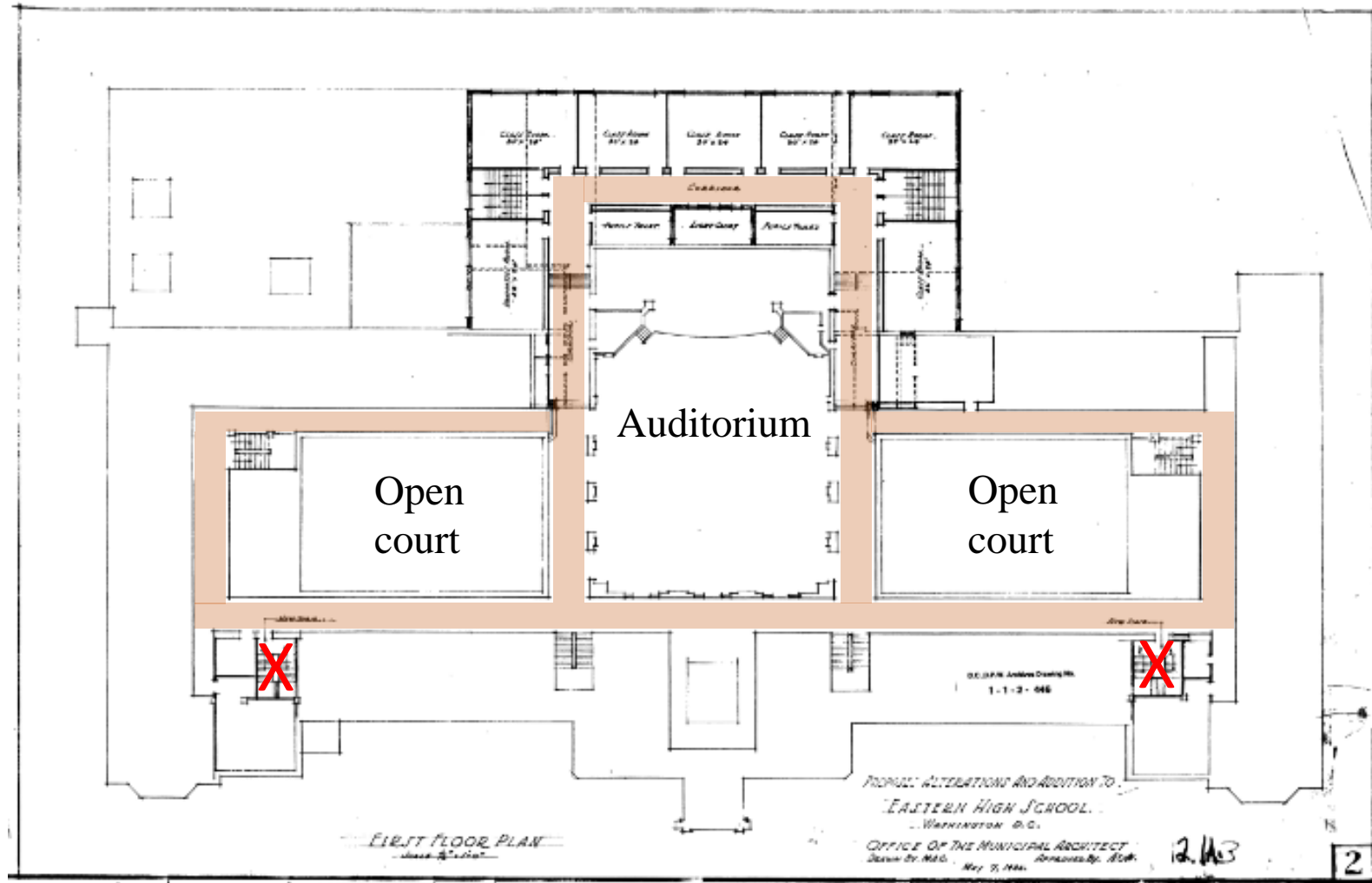
Although agitation for new Eastern was started in 1910, it was six years later before Congress appropriated part of the funds for its construction. The site was acquired in 1916 at a consideration of approximately \$225,000. Original plans for the building were drawn by Snowden Ashford, former municipal architect, and revised by Albert L. Harris, his successor.

Eastern High School was organized as a separate high school in the fall



First floor plan

Early design "Snowden Ashford" "Approved Nov 4, 1920"



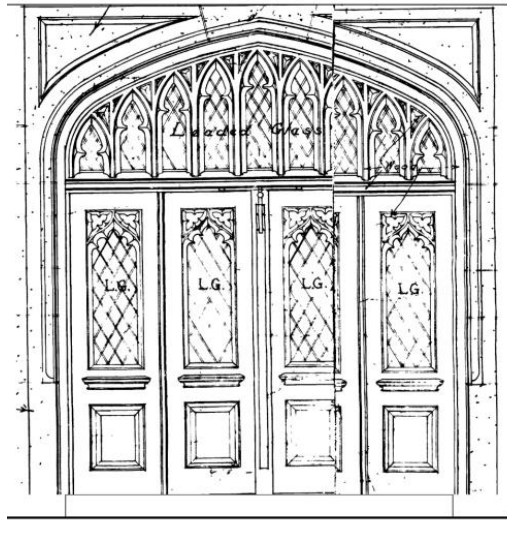
First floor plan

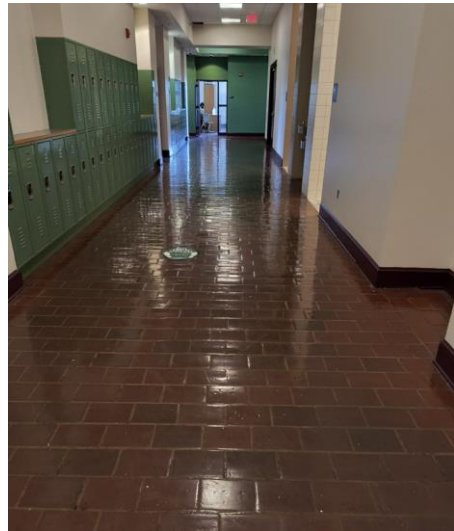
From "1935 PROPOSED ALTERATIONS AND ADDITIONS"











Integration and later history

Eastern integrated following *Bolling v. Sharpe* (1954)

- Freedom School 1968
- Academics
- Choir
- Marching band



“Pride of Capitol Hill”

